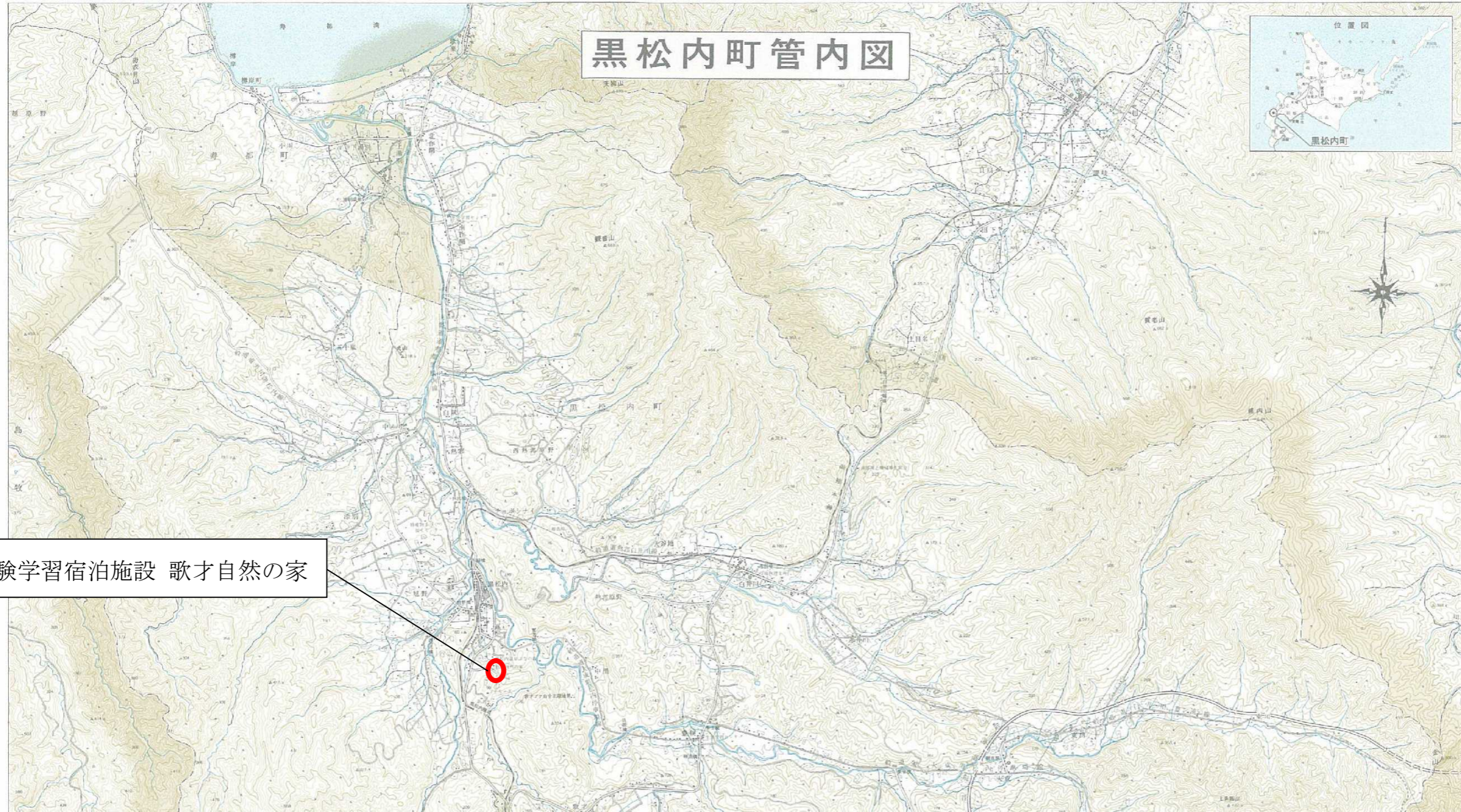


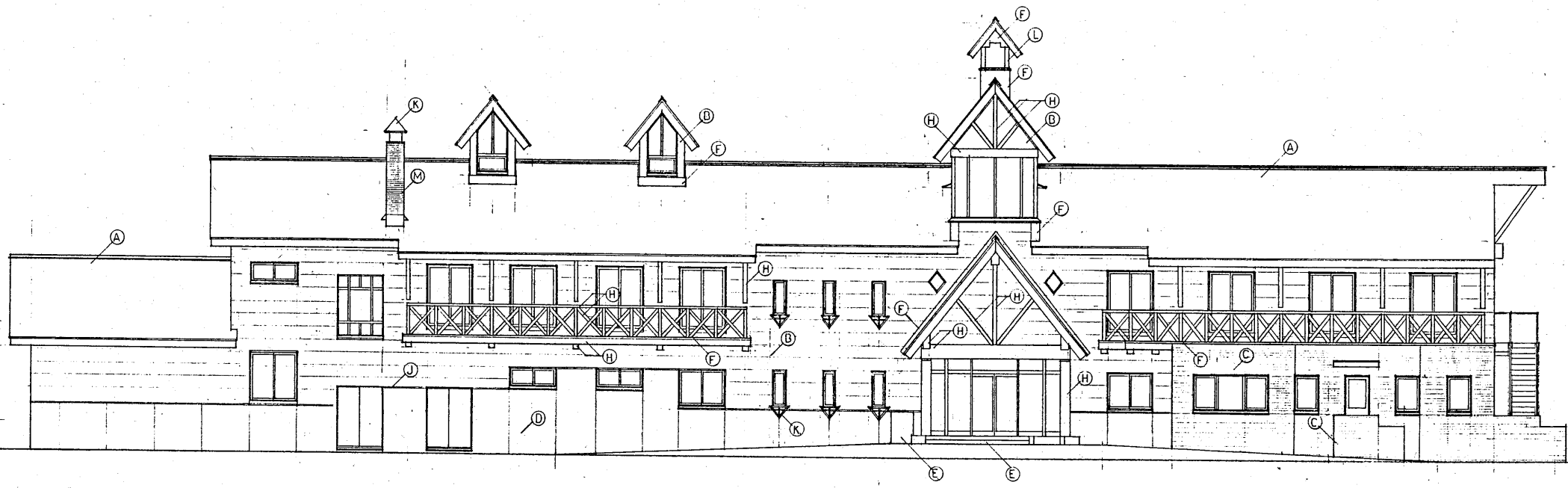
「この地図は建設省国土地理院長の承認を得て同院発行の五万分の一地形図を複製したものである。
(承認番号) 平10, 道特第 948 号」

黒松内町管内図

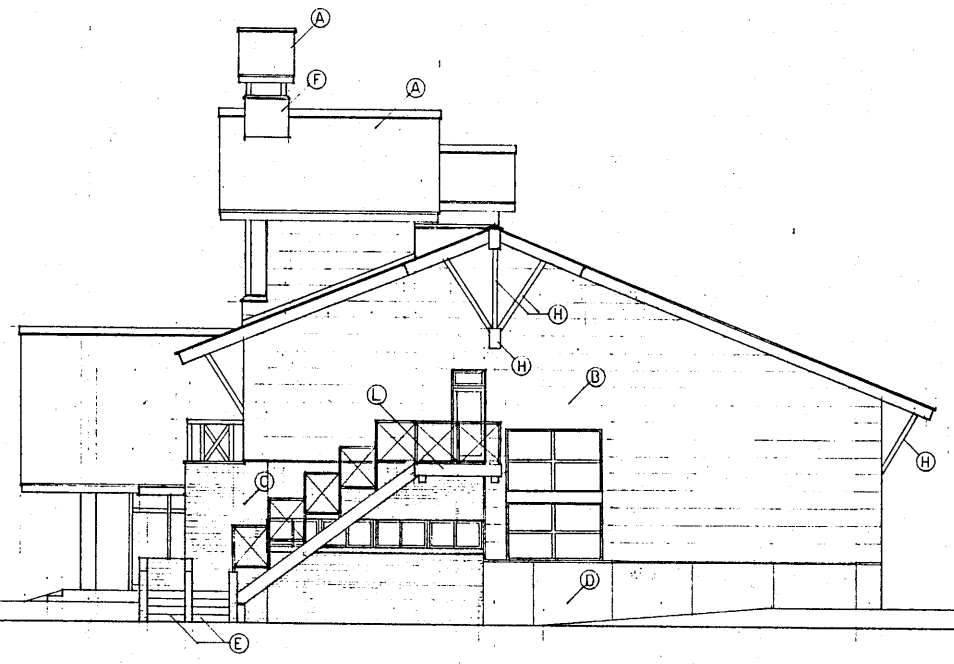


自然体験学習宿泊施設 歌才自然の家

- ### 記号
- 1:20,000 contour lines (10m interval)
 - 2:50,000 contour lines (10m interval)
 - 3:50,000 contour lines (20m interval)
 - 4:50,000 contour lines (25m interval)
 - 5:50,000 contour lines (30m interval)
 - 6:50,000 contour lines (35m interval)
 - 7:50,000 contour lines (40m interval)
 - 8:50,000 contour lines (45m interval)
 - 9:50,000 contour lines (50m interval)
 - 10:50,000 contour lines (55m interval)
 - 11:50,000 contour lines (60m interval)
 - 12:50,000 contour lines (65m interval)
 - 13:50,000 contour lines (70m interval)
 - 14:50,000 contour lines (75m interval)
 - 15:50,000 contour lines (80m interval)
 - 16:50,000 contour lines (85m interval)
 - 17:50,000 contour lines (90m interval)
 - 18:50,000 contour lines (95m interval)
 - 19:50,000 contour lines (100m interval)
 - 20:50,000 contour lines (105m interval)
 - 21:50,000 contour lines (110m interval)
 - 22:50,000 contour lines (115m interval)
 - 23:50,000 contour lines (120m interval)
 - 24:50,000 contour lines (125m interval)
 - 25:50,000 contour lines (130m interval)
 - 26:50,000 contour lines (135m interval)
 - 27:50,000 contour lines (140m interval)
 - 28:50,000 contour lines (145m interval)
 - 29:50,000 contour lines (150m interval)
 - 30:50,000 contour lines (155m interval)
 - 31:50,000 contour lines (160m interval)
 - 32:50,000 contour lines (165m interval)
 - 33:50,000 contour lines (170m interval)
 - 34:50,000 contour lines (175m interval)
 - 35:50,000 contour lines (180m interval)
 - 36:50,000 contour lines (185m interval)
 - 37:50,000 contour lines (190m interval)
 - 38:50,000 contour lines (195m interval)
 - 39:50,000 contour lines (200m interval)
 - 40:50,000 contour lines (205m interval)
 - 41:50,000 contour lines (210m interval)
 - 42:50,000 contour lines (215m interval)
 - 43:50,000 contour lines (220m interval)
 - 44:50,000 contour lines (225m interval)
 - 45:50,000 contour lines (230m interval)
 - 46:50,000 contour lines (235m interval)
 - 47:50,000 contour lines (240m interval)
 - 48:50,000 contour lines (245m interval)
 - 49:50,000 contour lines (250m interval)
 - 50:50,000 contour lines (255m interval)
 - 51:50,000 contour lines (260m interval)
 - 52:50,000 contour lines (265m interval)
 - 53:50,000 contour lines (270m interval)
 - 54:50,000 contour lines (275m interval)
 - 55:50,000 contour lines (280m interval)
 - 56:50,000 contour lines (285m interval)
 - 57:50,000 contour lines (290m interval)
 - 58:50,000 contour lines (295m interval)
 - 59:50,000 contour lines (300m interval)
 - 60:50,000 contour lines (305m interval)
 - 61:50,000 contour lines (310m interval)
 - 62:50,000 contour lines (315m interval)
 - 63:50,000 contour lines (320m interval)
 - 64:50,000 contour lines (325m interval)
 - 65:50,000 contour lines (330m interval)
 - 66:50,000 contour lines (335m interval)
 - 67:50,000 contour lines (340m interval)
 - 68:50,000 contour lines (345m interval)
 - 69:50,000 contour lines (350m interval)
 - 70:50,000 contour lines (355m interval)
 - 71:50,000 contour lines (360m interval)
 - 72:50,000 contour lines (365m interval)
 - 73:50,000 contour lines (370m interval)
 - 74:50,000 contour lines (375m interval)
 - 75:50,000 contour lines (380m interval)
 - 76:50,000 contour lines (385m interval)
 - 77:50,000 contour lines (390m interval)
 - 78:50,000 contour lines (395m interval)
 - 79:50,000 contour lines (400m interval)
 - 80:50,000 contour lines (405m interval)
 - 81:50,000 contour lines (410m interval)
 - 82:50,000 contour lines (415m interval)
 - 83:50,000 contour lines (420m interval)
 - 84:50,000 contour lines (425m interval)
 - 85:50,000 contour lines (430m interval)
 - 86:50,000 contour lines (435m interval)
 - 87:50,000 contour lines (440m interval)
 - 88:50,000 contour lines (445m interval)
 - 89:50,000 contour lines (450m interval)
 - 90:50,000 contour lines (455m interval)
 - 91:50,000 contour lines (460m interval)
 - 92:50,000 contour lines (465m interval)
 - 93:50,000 contour lines (470m interval)
 - 94:50,000 contour lines (475m interval)
 - 95:50,000 contour lines (480m interval)
 - 96:50,000 contour lines (485m interval)
 - 97:50,000 contour lines (490m interval)
 - 98:50,000 contour lines (495m interval)
 - 99:50,000 contour lines (500m interval)
 - 100:50,000 contour lines (505m interval)
- Other symbols include:
- Roads: National, Prefectural, Municipal
 - Railroads: Shinkansen, Tokaido, Local
 - Rivers and streams
 - Lakes and ponds
 - Mountains and hills
 - Settlements: Cities, Towns, Villages
 - Public buildings: Schools, Post office, Fire station
 - Natural features: Forests, Parks, Sanctuaries
 - Historical sites: Relics, Monuments
 - Utilities: Power lines, Telephone lines



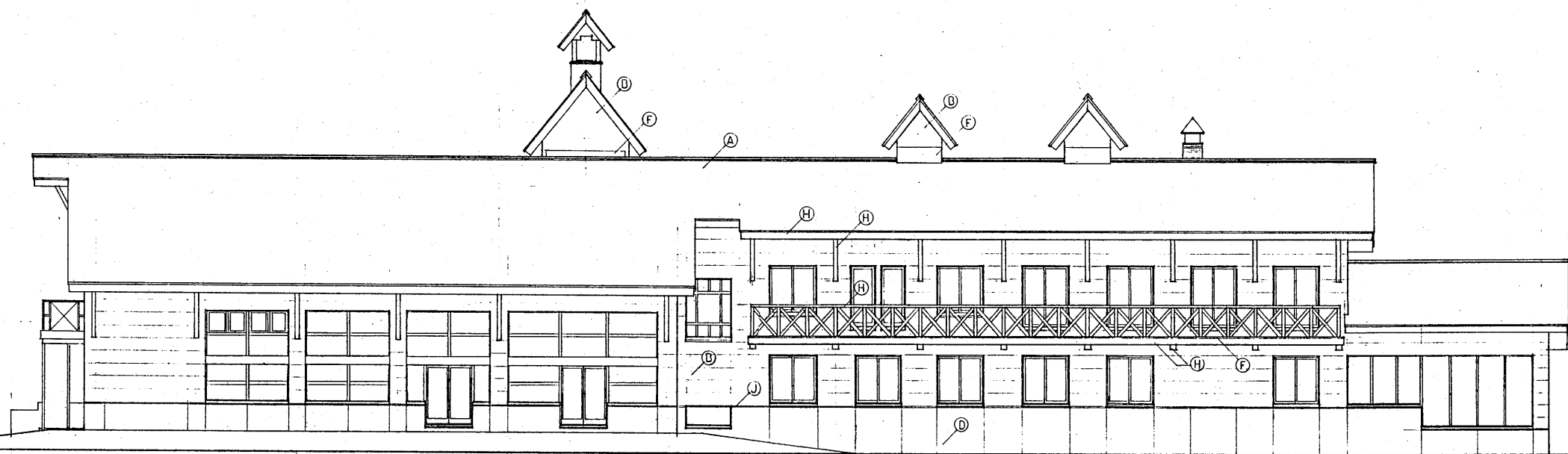
南立面図 1/100



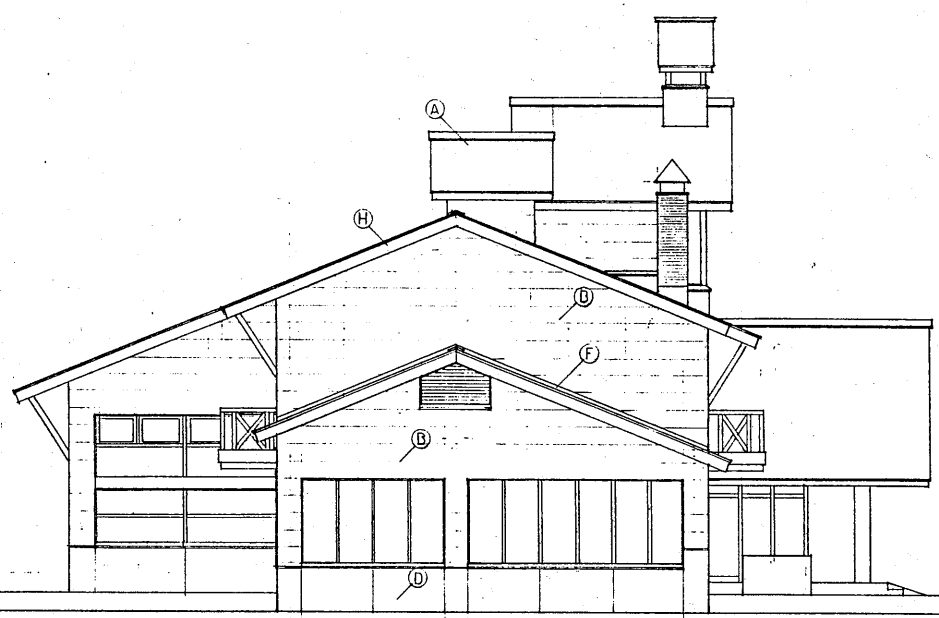
東立面図 1/100

記号	仕上 材
(A)	長尺杉・銀葉 00 ⁺ 積層
(B)	木目調マイカング AEP. (2022年仕様・ボルト閉鎖)
(C)	珪藻土工法タイル
(D)	工型・1.21の AEP.
(E)	床用珪藻土タイル 150角
(F)	杉・銀葉 00 ⁺ 積層
(G)	黒色アルミ
(H)	黒色 平引き下り
(J)	アルミ足元 (既製品)
(K)	ステンレス HL
(L)	ステンレス FEP
(M)	珪藻土製小口平タイル

黒 松 内 町
 自然体験学習宿泊施設新築工事
 立面図 1. 1/100
 2. 1. (概)
 727
 6/25
 09 614
 登録第 33551 出
 1 級建築士 山本 昌 夫
 株式会社 創 建 社

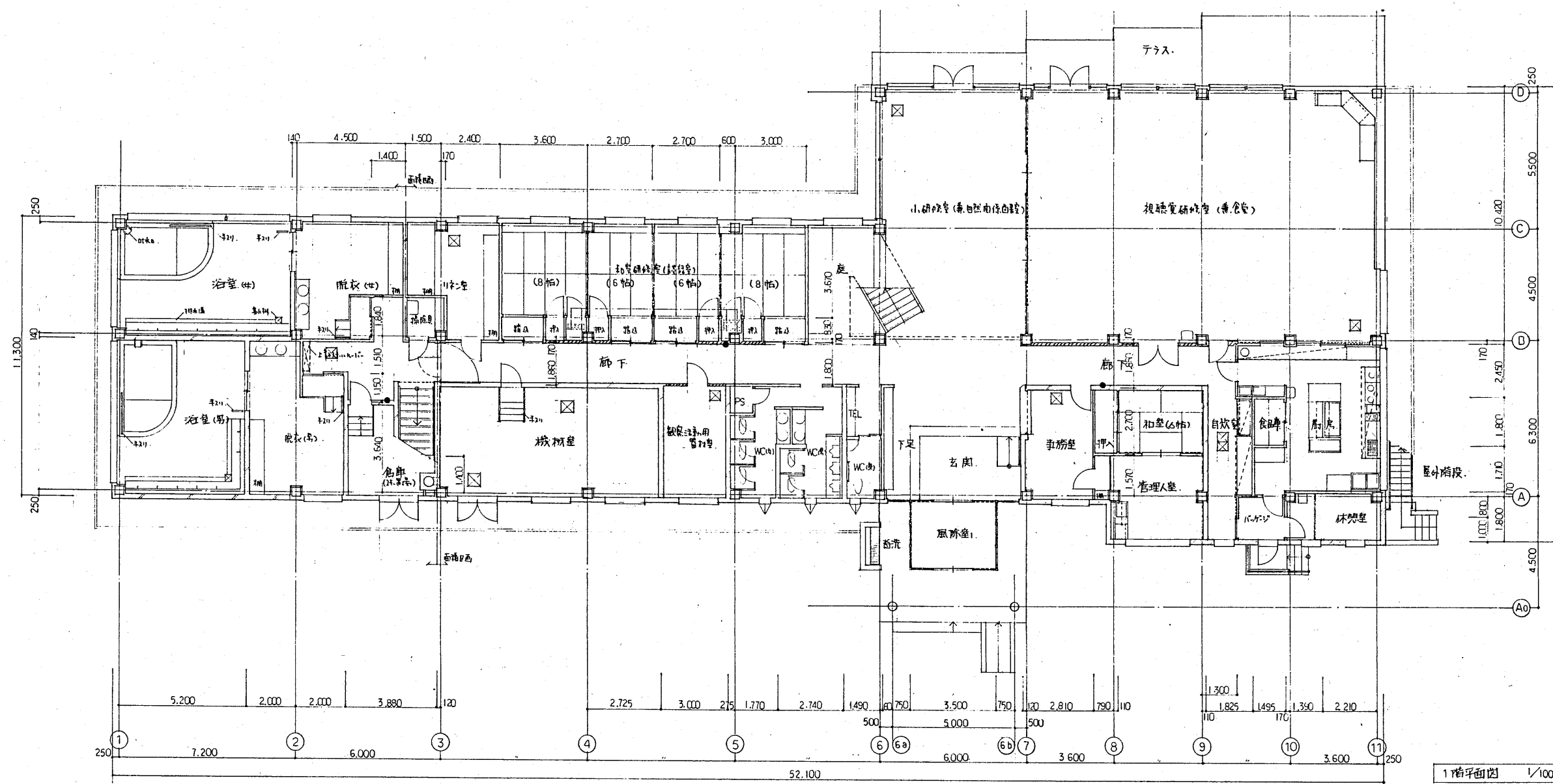
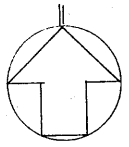


北立面図 1/100



西立面図 1/100

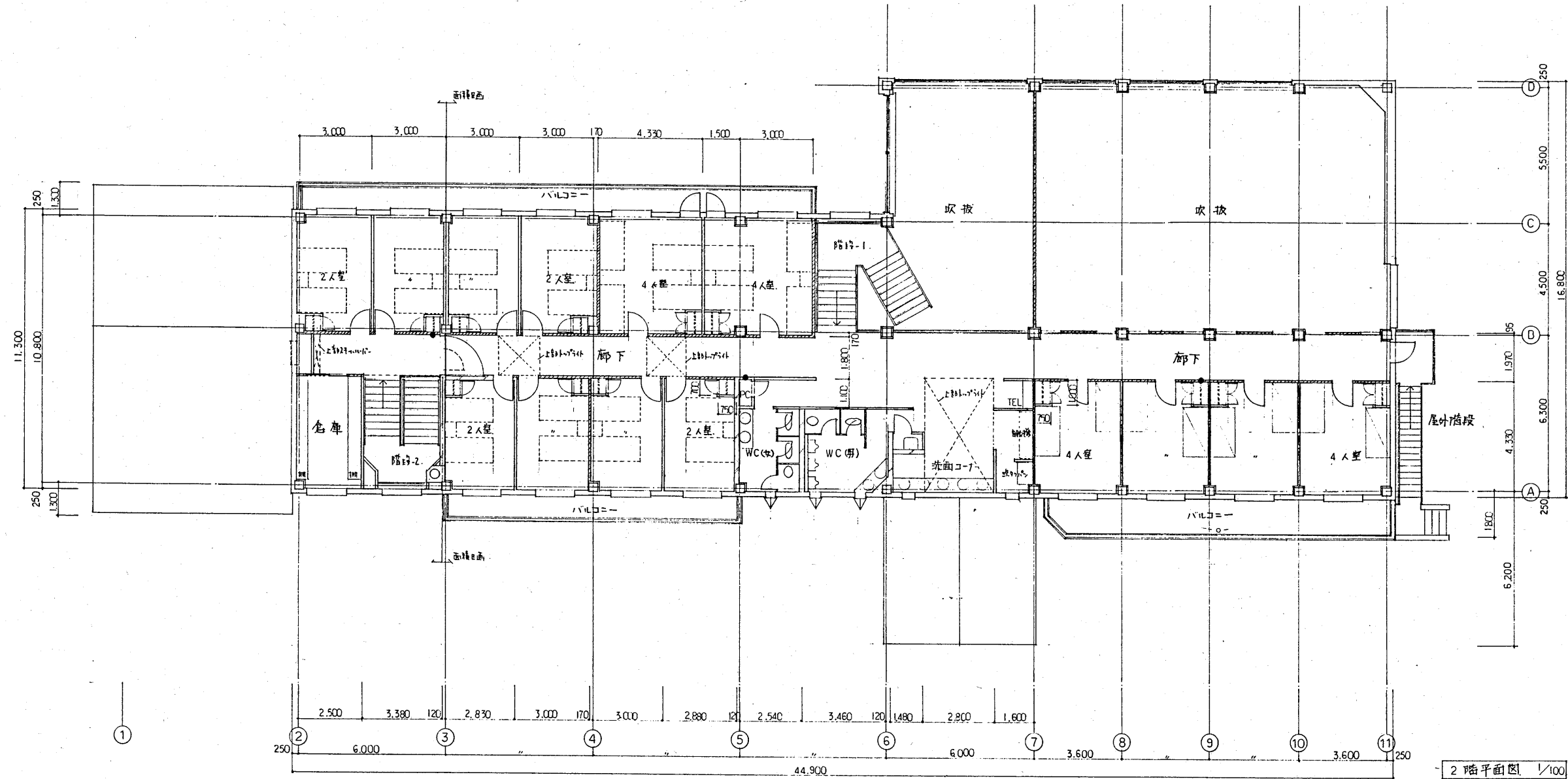
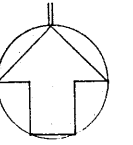
黒松内町	
自然体験学習宿泊施設新築工事	
立面図 2.	1/100
2.	1.
(意)	
1/23	1/23
<small>印 614 登録第 3355 (出) 1級建築士 山本 昌夫</small> (株) 創建社	



1階平面図 1/100

- //// 300H-下地盤、φ150
- ==== 鉄骨下地盤
- /// 300H-1700-下地盤、φ150
- ==== 軽量鉄骨下地盤、29.1.65 9x9
- 消火器設置
- 面積図表の合計値は概900E
- 300H-1700-φ150 7x7x7
- 厚さ450 7x7x7 鉄骨

黒松内町	
自然体験学習宿泊施設新築工事	
1階平面図	1/100
2.	1.
4/23	(蔵)
00 014 登録第 3355 (第) 1級建築士 山本 大 家	



2 階平面図 1/100

- 鉄骨工法
- /// 200mm x 200mm x 150mm 鉄骨
- ==== 軽量鉄骨下地盤 200mm x 200mm (基礎壁等部のみ 250mm x 250mm)
- ~~~~ 床下地盤 200mm x 200mm (内部の200mm x 200mm 全面 JPB-02 (1層部))
- 換気器具
- 凡例は別紙を参照してください。
- 面積は各部の開口幅900mmを基準として計算されています。

黒松内町	
自然体験学習宿泊施設新築工事	
2 階平面図	1/100
2. 1.	(意)
727	5/23
株式会社 山本建設 〒104-8555 東京都中央区本町2-1-1	